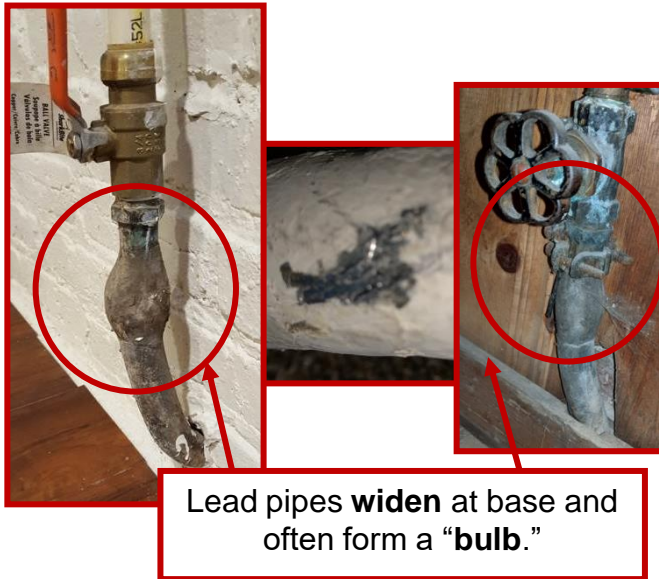


Water Service Pipe Material Identification

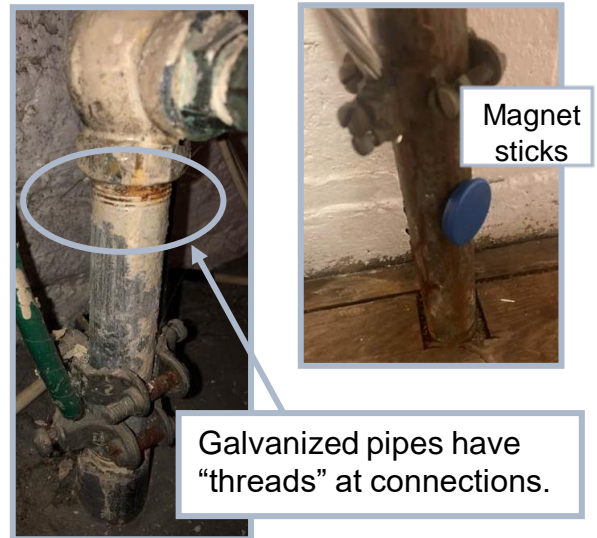
Most Service Lines at Hebgen WSD are expected to be copper, PVC, or HDPE (black or blue plastic)

	Lead	Galvanized Iron	Copper	Brass
Outer Appearance	Dull gray, bendable; Often curves between wall/floor and valve	Dark gray or black; Straight rigid pipe	Brown; Can have green corrosion spots	Brown; Can have green corrosion spots
Threads at connections	None	Yes	None	Yes
Scratch Test (coin or key)	Shiny silver	Hard to scratch, remains gray	Copper, like a penny	Gold color
Magnet Test	Does not stick	Magnet WILL stick	Does not stick	Does not stick

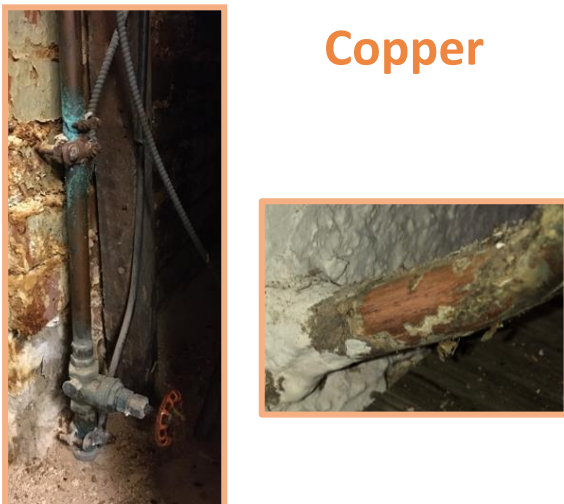
Lead



Galvanized Iron



Copper



Brass



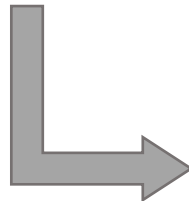
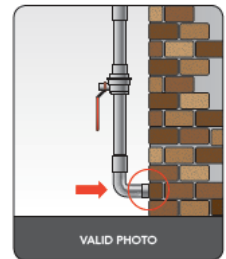
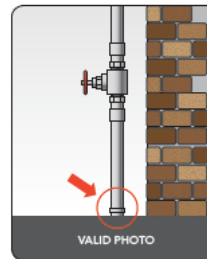
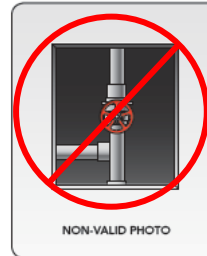
Instructions to Provide Water Pipe Material Information

Step 1

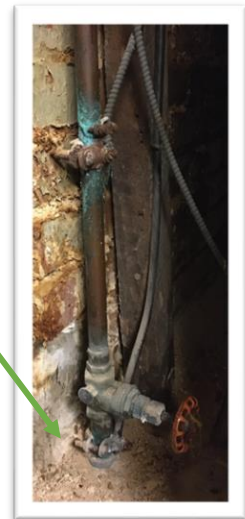
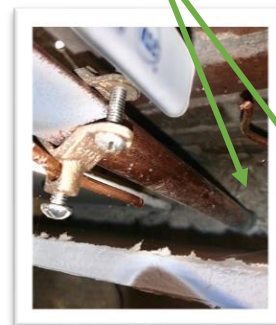
Locate the water service line entering the building. You need to see the pipe where it comes through the floor or wall. In the basement or lowest floor, or whole-house water shut-off valve nearby.



Cannot see where pipe comes through - try to pull back insulation and use phone camera to view pipe at breakthrough.



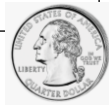
Pipe coming through floor



Step 2

Use Pipe Material Identification Sheet

- Look for threads at connections.
- Scratch pipe with a coin or key to reveal the metal. You may need to scratch through corrosion or paint. Lead is soft and scratches easily.
- See if a kitchen magnet sticks to the pipe. A magnet will not stick to a lead pipe.



Step 3

Take photos.

1. Pipe coming through wall or floor.
2. Further view of pipe that includes shut off valve.



Step 4

Send photos to hwds@hebgenwds.org.